

Manually installing SQL for Ajera

Determine what version of Microsoft SQL Server your firm requires. The Ajera installation automatically installs Microsoft SQL Server 2008 R2 Express as its database on your server. Your database size and the number of Ajera users may require that you install a full version of Microsoft SQL Server 2008 or 2012.

Follow the instructions in this document only if one of the following scenarios applies:

- Your firm requires a version of Microsoft SQL Server other than SQL Server 2008 R2 Express.
- You need to install SQL Server 2008 R2 Express to a different directory than the default location.

Note: The steps described in this document work for both Ajera 7 and Ajera 8.

Before you begin

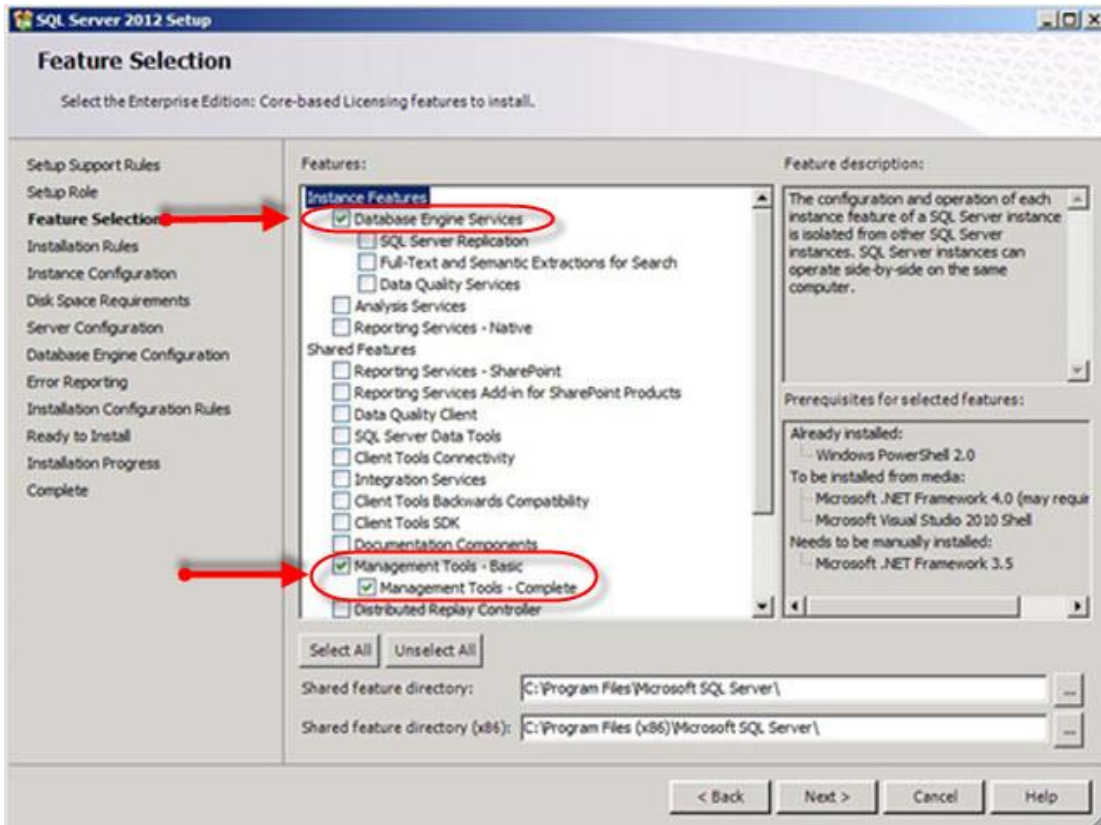
1. Verify that Microsoft .NET Framework 3.5.1 is installed on the server and on each workstation that requires access to Ajera. The installation requires this version.
2. On your Ajera server, open Server Manager and add the .NET 3.5.1 features.
3. Click **Next**.
4. Run setup from the DVD or other installation files.
5. Depending on your User Account Control settings in the Control Panel, click **Yes** to continue.

Install SQL Server

1. In the left-hand panel of the **SQL Server Installation Center** window, click **Installation**.
2. In the right-hand panel, click the **New SQL Server stand-alone installation or add features to an existing installation** link.
3. On the **Setup Support Rules** window, fix any listed failures and click **OK**.
4. If you are installing the full version of SQL Server 2008 or 2013, enter your product key on the **Product Key** window and click **Next**.
5. On the **License Terms** window, select the **I accept the license terms** check box and click **Next**.
6. The **Setup Support Rules** window reappears. Fix any failures listed and click **Next**.
7. On the **Setup Role** window, select the **SQL Server Feature Installation** option and click **Next**.

8. On the **Feature Selection** window (illustrated below), select the following check boxes and click **Next**:

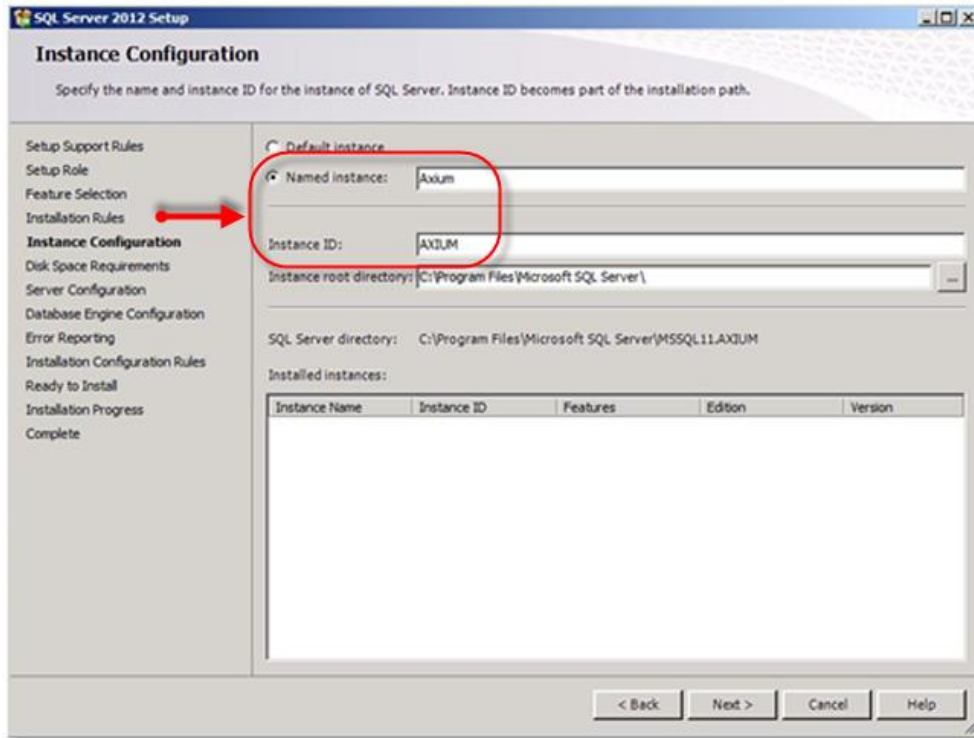
- Database Engine Services (required)
- Management Tools – Basic (optional, allows Axium access to troubleshoot issues)
- Management Tools – Complete (optional, allows Axium access to troubleshoot issues)



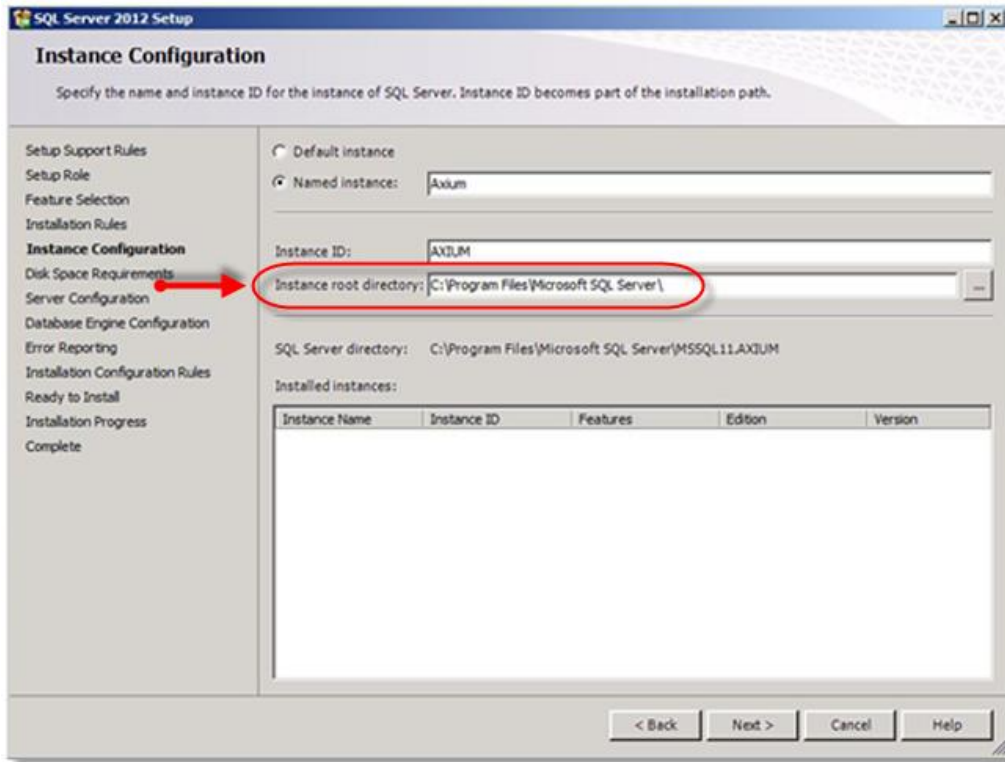
9. The **Setup Support Rules** window reappears. Fix any failures listed on the window and click **Next**.

10. On the **Instance Configuration** window (illustrated below), check the **Named instance** option and enter an instance name of *Axium*. In the **Instance ID** field, enter *Axium*.

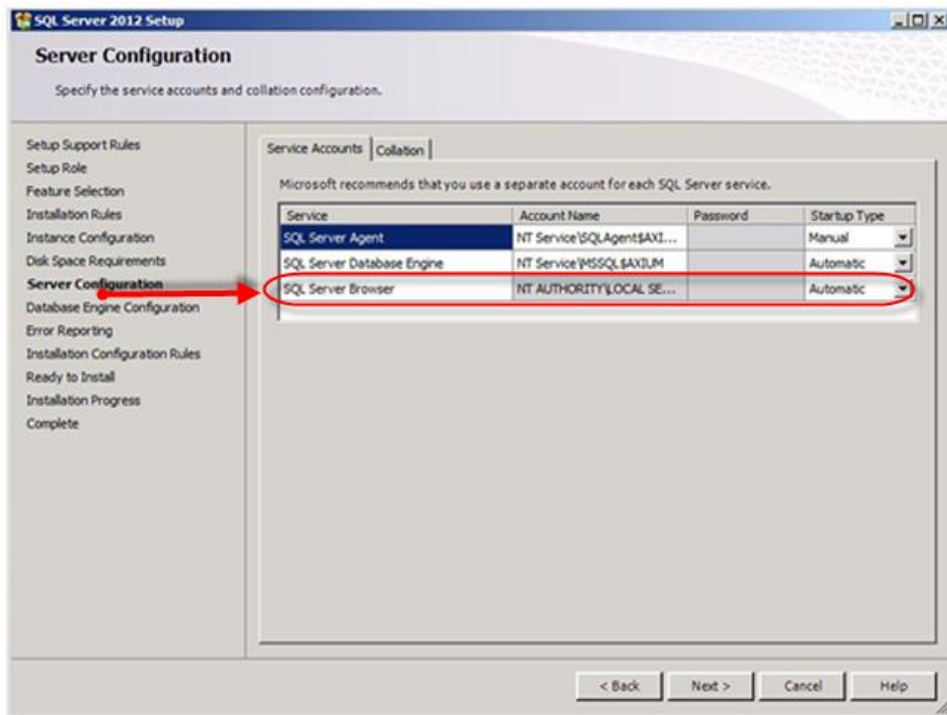
Warning: This Axium instance name must exist in order for the Ajera installation to connect successfully with your full version of SQL. If the Ajera installation cannot find the Axium instance name, it installs SQL Server 2008 R2 Express by default.



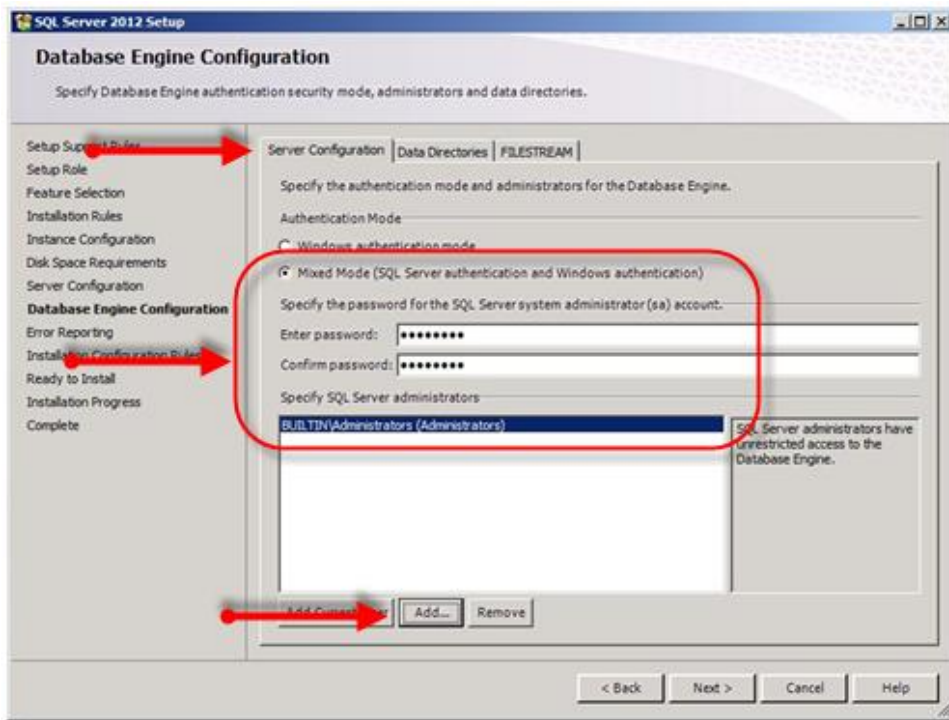
- If you want to install SQL somewhere other than the default location, enter the path to a local drive and folder on your server in the **Instance root directory** field (illustrated below). Click **Next**.



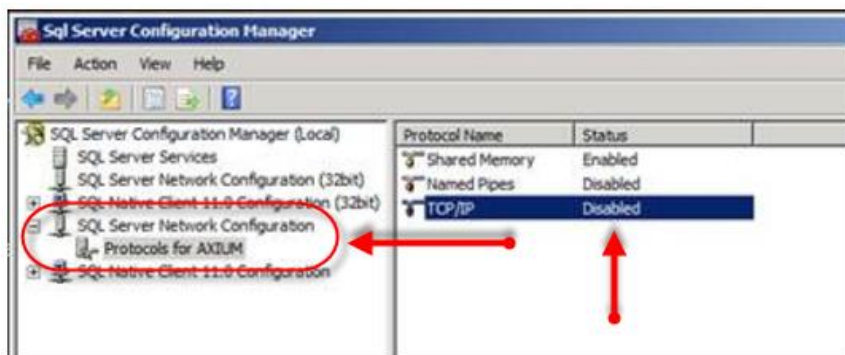
- The **Disk Space Requirements** window displays a summary of space available on the drive where you selected to install SQL. Click **Next**.
- On the **Server Configuration** window (illustrated below), set the **SQL Server Browser, Startup Type** setting to **Automatic** and click **OK**.



14. On the **Database Engine Configuration** window (illustrated below), click the **Server Configuration** tab. Select the **Mixed Mode** option and enter a password, using only letters and numbers without special characters, such as `\/:*?<>|`. Store your password in a secure location for future reference.



15. Click **Add** to enter your SQL Administrators.
16. Click **Next** until the **Ready to Install** window appears. Click **Install**.
17. When prompted to restart your computer, click **OK** and close all the windows.
18. Go to **Start > All Programs > Microsoft SQL Server 2008 or 2012**, and choose the **Configuration tools > SQL Server Configuration Manager**.
19. Restart the Axium instance of SQL Server (illustrated below). If it is not already enabled, enable TCP/IP so that users can connect to SQL Server.



Your SQL installation is now complete.

20. You can now install Ajera. Refer to the [Ajera Installation Guide](#) for detailed steps.